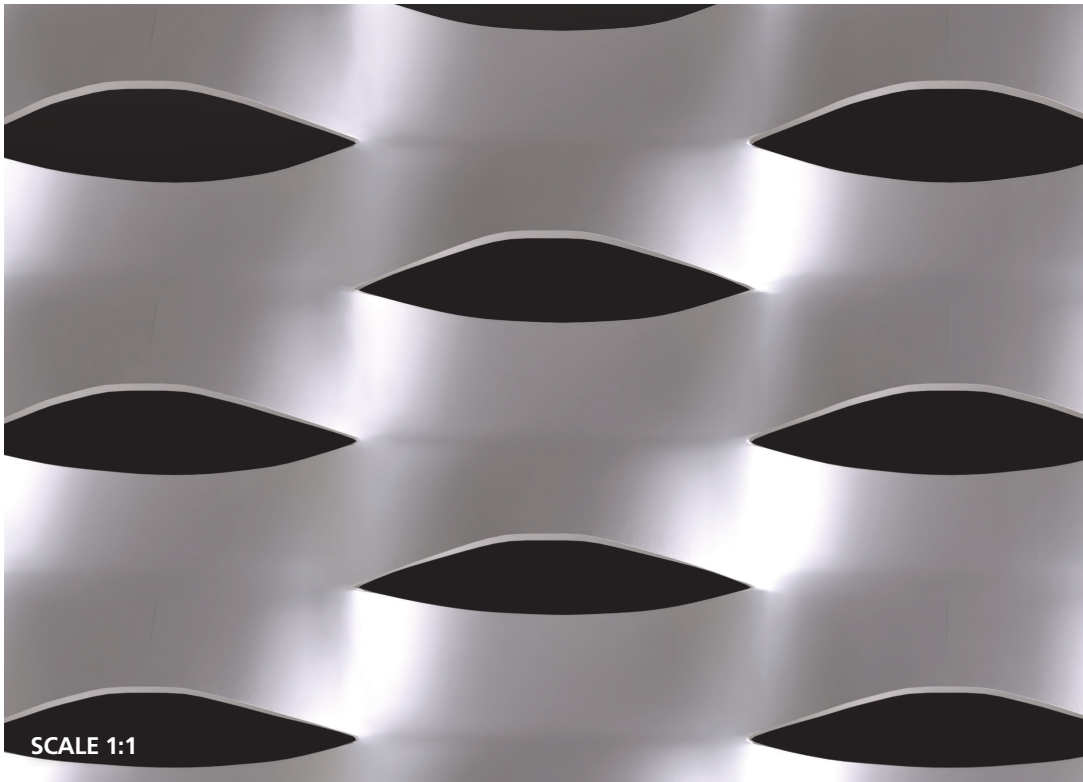


APEX04 EXPANDED MESH



APEX04

Short Way Diamond
1.5"

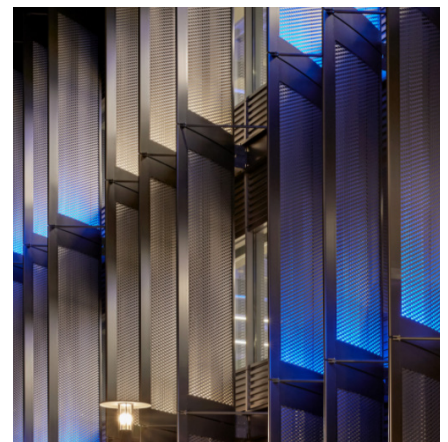
Long Way Diamond
4"

Visual % Open Area
18%

Mechanical % Open Area
37%

Max Landscape Panel Size
60" SWD x 120" LWD

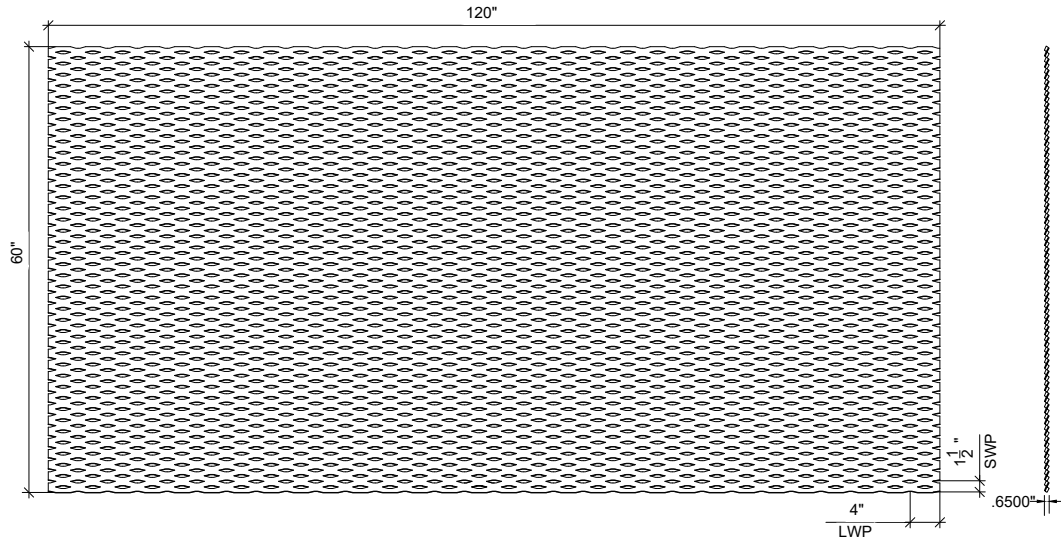
Max Portrait Panel Size
120" SWD x 60" LWD



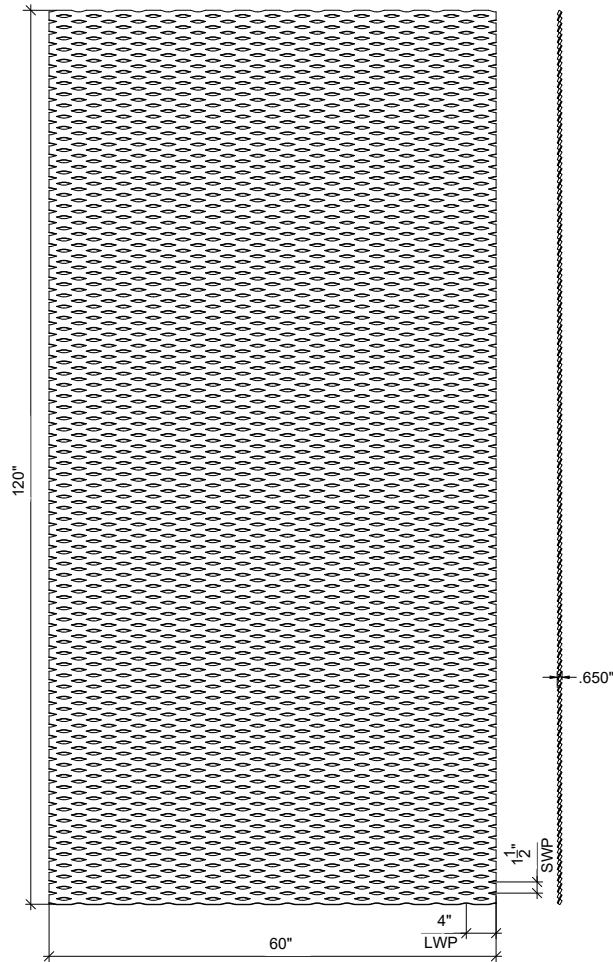
APEX04 EXPANDED MESH



Maximum Landscape Panel Size



Maximum Portrait Panel Size



AMICO ARCHITECTURAL EXPANDED MESH

Standard Material Specifications



Mesh Name	Available Aluminum Alloy	Max Portrait, SWDx LWD	Max Landscape, SWD x LWD	Visual Open %	Mech. Open Area %	Weight, lbs/sf	(SWD) Short Way Diamond, Inches	(LWD) Long Way Diamond, Inches	Strand Width, Inches	Standard Strand Thickness, Inches
APEX01	5005		59.5" x 120"	46%	73%	0.98 lbs/sf	3.50"	8.00"	0.93"	0.125"
APEX02	5005	143.38" x 48"		40%	72%	1.09 lbs/sf	3.05"	8.00"	0.93"	0.125"
APEX03	3003, 5005	145" x 48"	60" x 132"	26%	62%	1.34 lbs/sf	2.50"	6.00"	0.93"	0.125"
APEX04	3003, 5005	120" x 60"	60" x 120"	18%	37%	1.48 lbs/sf	1.50"	4.00"	0.62"	0.125"
APEX05	5005	138.69" x 48"	58.29" x 120"	10%	22%	1.59 lbs/sf	2.01"	4.00"	0.93"	0.125"
Bellesa	3003, 5005	120" x 48"		36%	59%	0.74 lbs/sf	0.63"	1.20"	0.21"	0.081"
Luxos	3003, 5005	120" x 48"		23%	31%	0.9 lbs/sf	0.40"	0.64"	0.10"	0.081"
Gracia	3003, 5005	120" x 48"	59.63" x 120"	52%	73%	0.85 lbs/sf	0.59"	4.00"	0.14"	0.125"
De Moda	3003, 5005	120" x 48"		25%	31%	1.34 lbs/sf	0.38"	4.00"	0.14"	0.125"
Cativar	3003, 5005	120" x 48"		55%	74%	0.81 lbs/sf	0.52"	5.33"	0.12"	0.125"
Hinte	5005	139.52" x 48"	58.73" x 120"	8%	9%	1.58 lbs/sf	2.18"	4.00"	0.50"	0.125"
Siro	3003, 5005	96.63" x 48"		25%	45%	1.69 lbs/sf	1.38"	3.00"	0.63"	0.125"
Modig	5005	138.45" x 48"		6%	28%	1.6 lbs/sf	2.13"	8.00"	1.00"	0.125"

