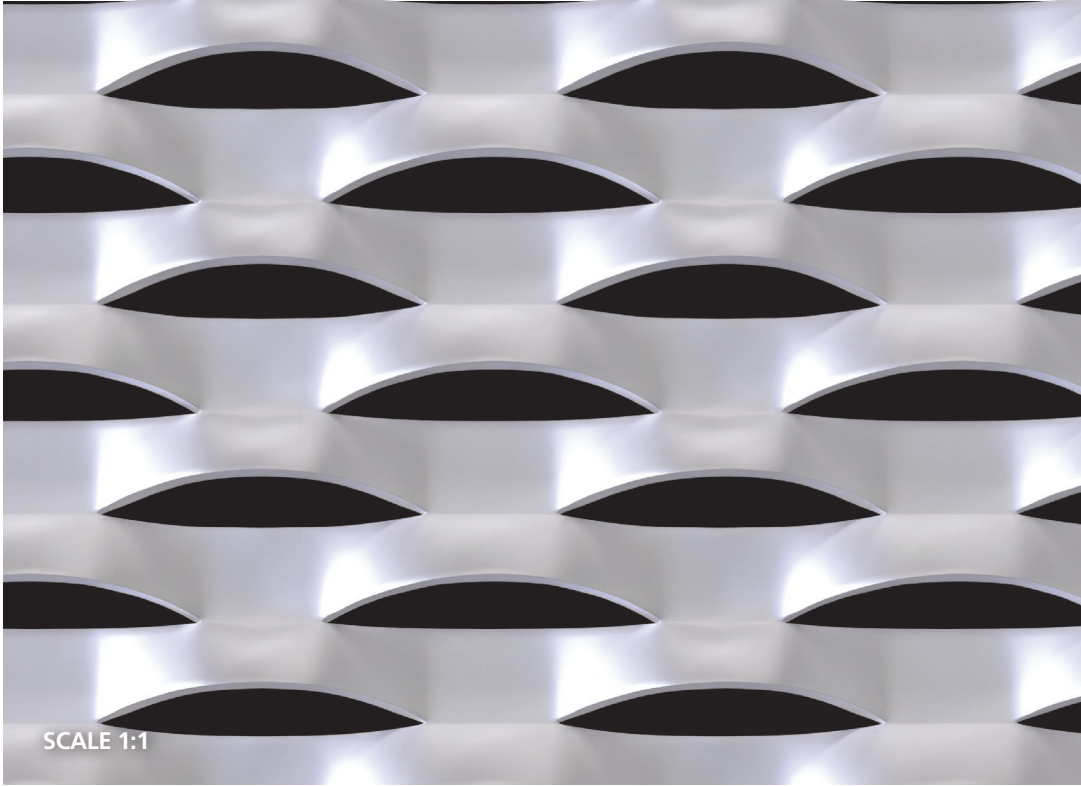
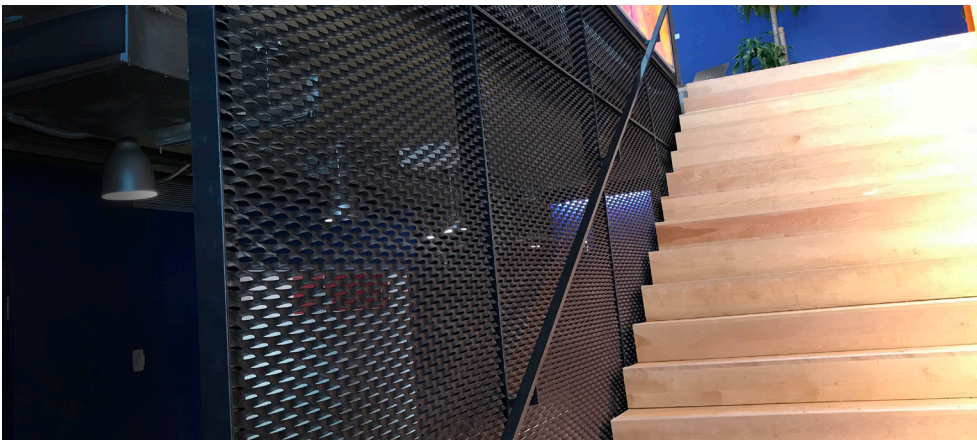
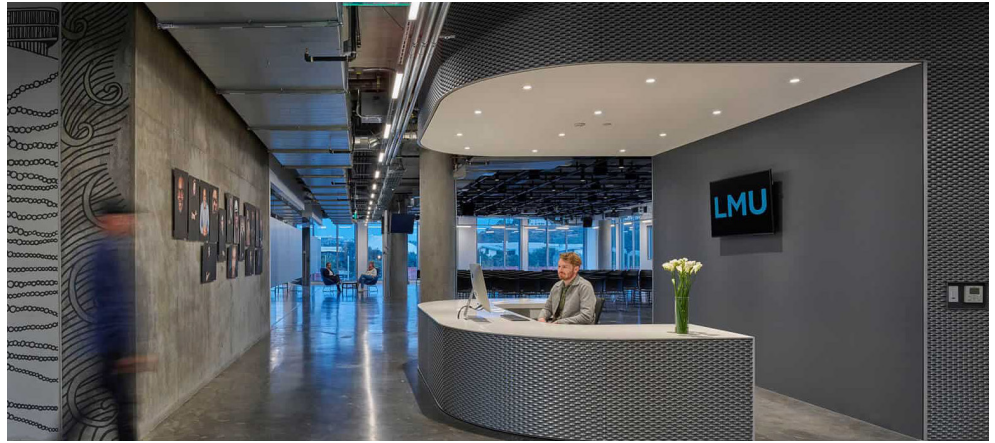
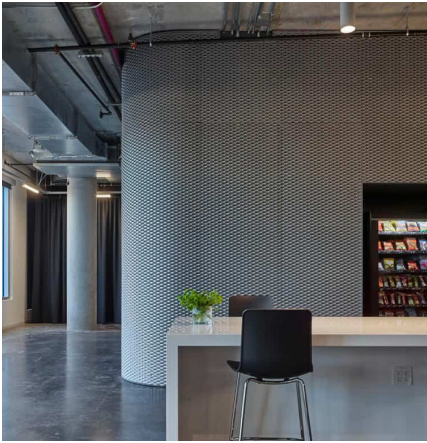


SIRO EXPANDED MESH



Siro
Short Way Diamond
1.38"
Long Way Diamond
3"
Visual % Open Area
25%
Mechanical % Open Area
45%
Max Portrait Panel Size
96.63" SWD x 48" LWD

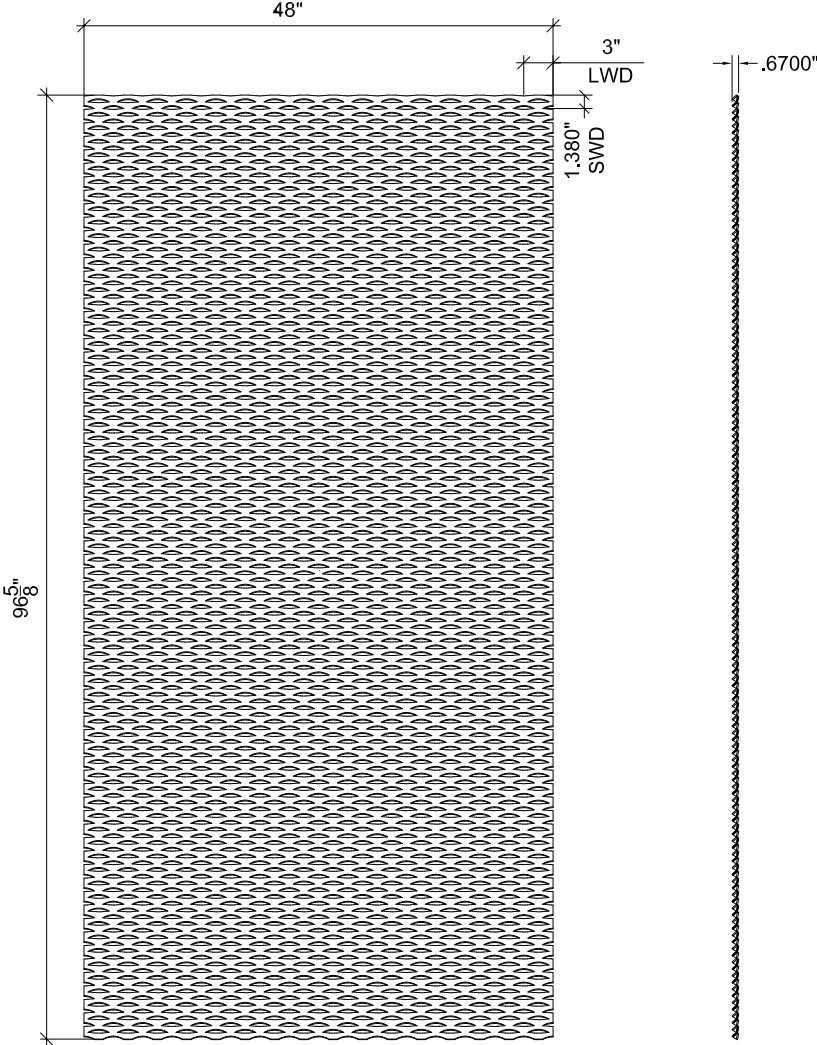
SCALE 1:1



SIRO EXPANDED MESH



Maximum Portrait Panel Size



AMICO ARCHITECTURAL EXPANDED MESH

Standard Material Specifications



Mesh Name	Available Aluminum Alloy	Max Portrait, SWDx LWD	Max Landscape, SWD x LWD	Visual Open %	Mech. Open Area %	Weight, lbs/sf	(SWD) Short Way Diamond, Inches	(LWD) Long Way Diamond, Inches	Strand Width, Inches	Standard Strand Thickness, Inches
APEX01	5005		59.5" x 120"	46%	73%	0.98 lbs/sf	3.50"	8.00"	0.93"	0.125"
APEX02	5005	143.38" x 48"		40%	72%	1.09 lbs/sf	3.05"	8.00"	0.93"	0.125"
APEX03	3003, 5005	145" x 48"	60" x 132"	26%	62%	1.34 lbs/sf	2.50"	6.00"	0.93"	0.125"
APEX04	3003, 5005	120" x 60"	60" x 120"	18%	37%	1.48 lbs/sf	1.50"	4.00"	0.62"	0.125"
APEX05	5005	138.69" x 48"	58.29" x 120"	10%	22%	1.59 lbs/sf	2.01"	4.00"	0.93"	0.125"
Bellesa	3003, 5005	120" x 48"		36%	59%	0.74 lbs/sf	0.63"	1.20"	0.21"	0.081"
Luxos	3003, 5005	120" x 48"		23%	31%	0.9 lbs/sf	0.40"	0.64"	0.10"	0.081"
Gracia	3003, 5005	120" x 48"	59.63" x 120"	52%	73%	0.85 lbs/sf	0.59"	4.00"	0.14"	0.125"
De Moda	3003, 5005	120" x 48"		25%	31%	1.34 lbs/sf	0.38"	4.00"	0.14"	0.125"
Cativar	3003, 5005	120" x 48"		55%	74%	0.81 lbs/sf	0.52"	5.33"	0.12"	0.125"
Hinte	5005	139.52" x 48"	58.73" x 120"	8%	9%	1.58 lbs/sf	2.18"	4.00"	0.50"	0.125"
Siro	3003, 5005	96.63" x 48"		25%	45%	1.69 lbs/sf	1.38"	3.00"	0.63"	0.125"
Modig	5005	138.45" x 48"		6%	28%	1.6 lbs/sf	2.13"	8.00"	1.00"	0.125"

