

WHY SHOULD YOU ASK YOUR ARCHITECT ABOUT EXPANDED MESH, LASER CUT METAL, AND PERFORATED PANELS?



Reduce Cost of Ownership:

How does expanded mesh and perforated metal reduce the cost of ownership of a building?

AMICO's materials, especially expanded mesh, can produce effective sun shade elements that reduce heat gain from the sun through windows without compromising on natural light. This design method significantly improves energy demand and your carbon footprint. With projections for electricity to continue to rise in the future, investment in sun shading now will pay dividends not just today but throughout the 20+ year life of the façade. [You can read our entire case study here to better understand this design approach.](#)



Maximize Tenant Experience and Occupancy Rates with Natural Light:

Why should you care about the quality of natural light?

Statistically, buildings with high daylight levels have a 5%-6% rent premium over spaces with low daylight levels [\[source\]](#). Expanded mesh and perforated metal are important to you because they are crafted into facade sunshade elements that helps reduce solar heat gain and allow your architects to expand window use thus increasing access to natural light in the building (while still meeting energy consumption goals). More natural light leads to happier tenants and visitors. Studies have shown that access to natural light improves people's moods, increases productivity, and positively contributes to overall health.

Guiding your architect to explore design forward use of AMICO Architectural Metals allows you to sensibly manage the cost of ownership while opening up a world of beautiful atriums bathed in dramatic sunlight, comfortable and enjoyable office spaces free from glare, and homes filled with warm light and happy tenants.



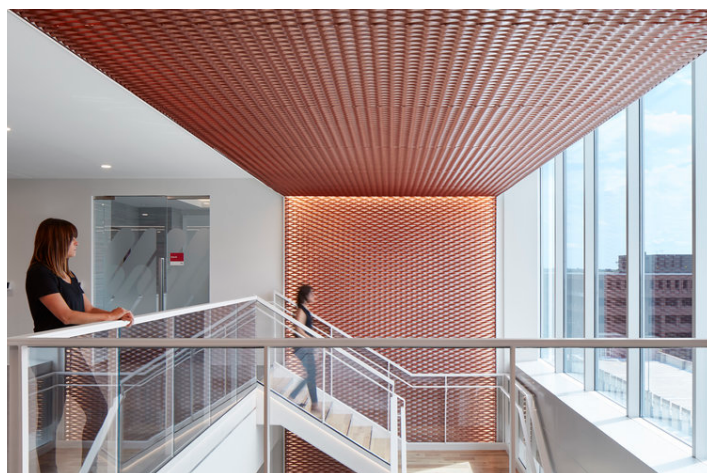
WHY SHOULD YOU ASK YOUR ARCHITECT ABOUT EXPANDED MESH, LASER CUT METAL, AND PERFORATED PANELS?

Drive Demand Through Great Design:

Why would tenants and owners want to live in unique, beautifully designed buildings?

Well-designed and unique environments can significantly enhance quality of life by providing a sense of beauty, pride in the community, increased well-being, and a positive emotional impact. Bringing generic, forgettable buildings to market is a disservice to your hard work and real estate strategy because buyers and tenants will gravitate toward the more appealing spaces.

AMICO Architectural Metal materials are highly customizable and have been a design centerpiece for many great designs, some of which have won significant recognition. The beauty and flexibility of working with these materials allow your architect to be highly creative with their process. [Visit our website with this link to see some iconic projects driven by great design.](#)



Building Brand and Value with Distinctive Design:

Why does memorable design matter?

Distinctive design builds the “brand” of your structure. Being at the forefront of people’s memory and a neighborhood centerpiece starts with great design. As you select your architect and guide them with a vision, offering them inspirational images could help ensure you get the design results you want. You can click here to see AMICO’s full portfolio of projects, which provides a lot of imagery for both interior and exterior applications. If you would like AMICO to give a (no obligation) lunch and learn training session to your architectural team, [you can click here to start the scheduling process.](#)



WHY SHOULD YOU ASK YOUR ARCHITECT ABOUT EXPANDED MESH, LASER CUT METAL, AND PERFORATED PANELS?

Preparing for an Uncertain Season of Ownership:

How do you stay compliant with emerging codes and laws?

Urban planners have begun the adoption of Building Performance Standards (BPS) to enhance energy efficiency and lower building carbon footprints in many major US cities. New York (Local Law 97), Boston (BERDO), and Seattle (BEPS) have enacted laws enforcing emissions standards, with increasingly strict greenhouse gas limits and penalties for non-compliant owners.

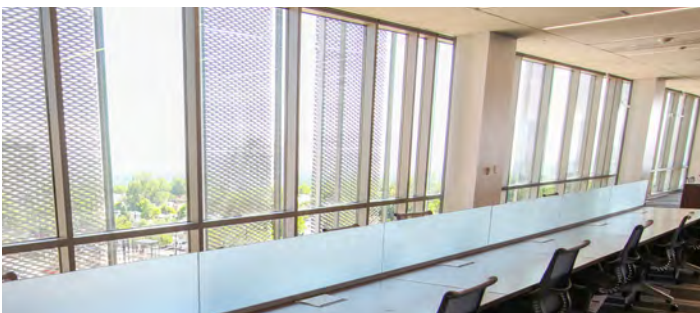
In New York City, building asset values are already being impacted as buyers lower their offers to factor in potential emissions penalties. Properties that are compliant with current and upcoming standards lease faster, have lower turnover & vacancies, and sell or refinance at higher prices. In contrast, non-compliance can lead to significant costs for property owners, including unpaid fines that may become a permanent lien on the building. AMICO Architectural Metal materials can be key to your de-carbonization strategy. Guiding your architect to use passive sun shading designs that can help you achieve compliance while beautifying your property.

Build Greater Value with Adaptive Reuse:

How can architectural metals help you build exciting structures faster and reduce costs?

Rehabilitation of existing properties has long been seen as a method for developers to move quickly into an area at a reduced cost, all while reducing a project's carbon footprint. The difficulty is that many buildings available for adaptive reuse can be difficult to make look attractive and appealing (both inside and outside); they likely look ugly and outdated.

Your architects and designers, therefore, need to investigate materials that can make a bold, design-forward statement that attracts tenants and buyers. Expanded Mesh and Laser Cut metals do just that. Ceilings, facades, and interior cladding with expanded mesh and laser-cut patterns can dramatically transform a space and make it feel fresh and exciting. The project below shows an old bank in Connecticut that had outlived its 1980s brutalist style. In this case, the architect did a great job implementing an expanded mesh façade that moved the visual sightlines away from the stale right angles and boring roof line and dramatically increased its curb appeal for potential tenants.





WHY SHOULD YOU ASK YOUR ARCHITECT ABOUT EXPANDED MESH, LASER CUT METAL, AND PERFORATED PANELS?

Be a Leader in the Neighborhood Value Creation:

How does the building contribute to the character and identity of the neighborhood?

Bad design can have a cooling effect on an area. For instance, if you put a parking garage that is a bare concrete shell, it may detract further investment in the surrounding plots. However, the opposite is true too; if that parking garage presents itself as a beautiful extension of your master-planned property and maintains a desirable look and character, developers will not hesitate to become your neighbor, driving up the value of your property. AMICO Architectural Metals had the privilege of helping execute a parking garage in San Jose's Santa Row development. This charming, walkable live-work community had the functional demand of a parking garage immediately adjacent to apartments and town-homes. Stantec's subtle and sophisticated cladding design brought to bear some of the great benefits of expanded mesh as a parking garage screen.

1. It successfully screened the undesirable sight lines into the concrete structure and unsightly cars, making it a structure people would happily live next to.
2. The mesh allowed airflow, so fresh air could pass in and car exhaust could exit.
3. The mesh created barriers to entry that could help control pedestrian access.
4. For the homeowners adjacent to the parking garage, the mesh reduced light pollution at night and prevented headlight glare into the neighbors' homes.



Frequently Asked Questions:

Are these materials expensive?

Depending on the exact design and the electrical costs in the region in which you live, solar shading can significantly offset the material's costs and, in some scenarios, provide active savings.

Is upkeep difficult and expensive?

No, it's not. Maintenance is defined by the powder coating or fluoropolymer paint manufacturer and typically is performed with mild soaps and water, similar to window washing.

If I cover my windows, how do I access the windows?

AMICO can work with your design team to plan access methods with hinges and access features to suit the maintenance required.





WHY SHOULD YOU ASK YOUR ARCHITECT ABOUT EXPANDED MESH, LASER CUT METAL, AND PERFORATED PANELS?

Product Range

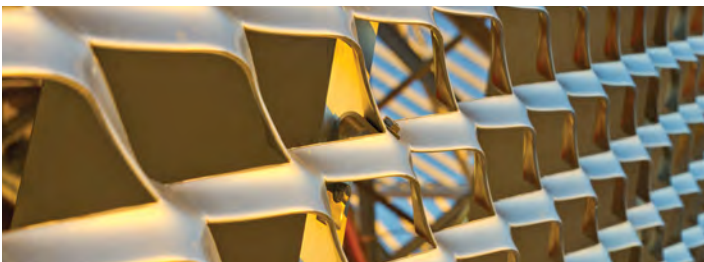
We offer a comprehensive suite of architectural metal products, including:

- Expanded metal mesh
- Perforated metals
- Picture PERFect - Image to Perforation Materials
- Architectural gratings
- Laser cut metals
- Custom fabricated systems

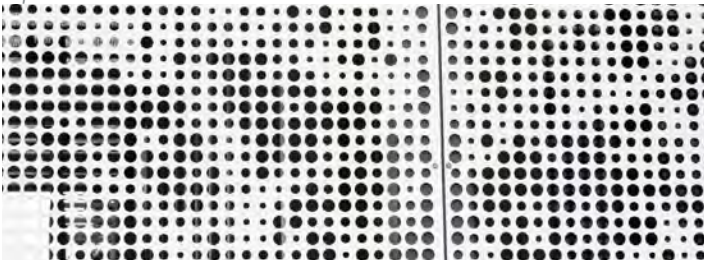
Our products are available in various materials such as aluminum, stainless steel, copper, and specialty metals, with a wide array of finishes to suit any design aesthetic.

Let's Talk About Your Next Project

Visit www.AMICOArchitectural.com to see more details, book a consultation. You can also call at 1.833.333.3902



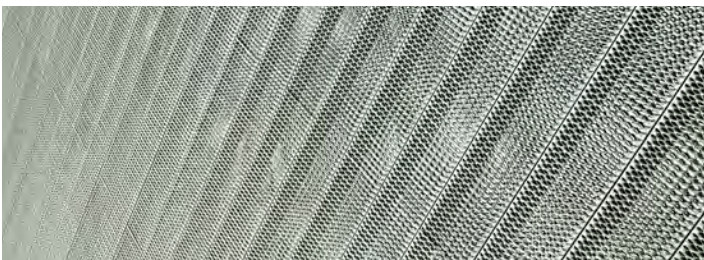
Expanded Metal Mesh



Perforated Metal



Laser Cut Metals



Architectural Gratings

