

AMICO ARCHITECTURAL CAPABILITIES AND QUALIFICATIONS



AMICO Architectural Metals, a division of AMICO, is a leading provider of innovative architectural metal solutions with a rich history dating back to 1939. Our expertise in perforated metal, expanded mesh, and architectural gratings has positioned us as a trusted partner for top architectural firms and contractors across North America.

Manufacturing Excellence

With a robust manufacturing footprint spanning North America, AMICO Architectural Metals leverages state-of-the-art facilities in strategic locations:

- Birmingham, AL: Headquarters and primary manufacturing hub. ISO 9001 Certified
- Visalia, CA: Home to Diamond Perforating, enhancing our West Coast presence
- Rochester NY, Charlotte NC: Erdle Perforating, expanding our capabilities in custom perforated metal solutions
- Canada: Multiple manufacturing locations serving North America

This extensive network allows us to maintain stringent quality control, ensure timely production, and offer unparalleled flexibility in meeting customer demands. Our supply chains allow us to shift demand where appropriate to be Made in Canada or Buy America Build America

Fabrication

AMICO Architectural offers end-to-end solutions:

- Custom fabrication capabilities
- Pre-assembled systems for efficient installation
- Project management and support
- Nationwide delivery and logistics

Our expertise ensures seamless integration of our products into diverse architectural projects.

Design Support and Engineering

Our team of experienced professionals provides comprehensive support throughout the design process:

- Architectural consultation
- Custom pattern development
- Engineering load analysis, ASCE 7-XX
- Detailing and shop drawings
- 3D modeling and visualization

We collaborate closely with architects to transform creative visions into reality, pushing the boundaries of architectural metal applications.

Sustainability and Innovation

We are committed to sustainable practices and continual innovation:

- Use of recycled materials
- Energy-efficient manufacturing processes
- Ongoing research and development of new patterns and applications
- Sustainable, zero VOC powder coatings applied to AAMA 2603, 2604, and 2605 standards

AMICO Architectural Metals is dedicated to advancing the field of architectural metals, contributing to the creation of expressive and meaningful environments.

With our comprehensive capabilities, nationwide presence, and commitment to excellence, AMICO Architectural Metals is uniquely positioned to deliver engineered facade and shading solutions that meet the exacting standards of the country's premier architectural firms and contractors.

AMICO ARCHITECTURAL METALS COMMON MATERIAL APPLICATIONS DIVISION 5, 7, 9, 10, 32



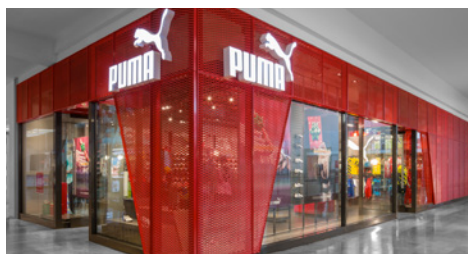
FACADES



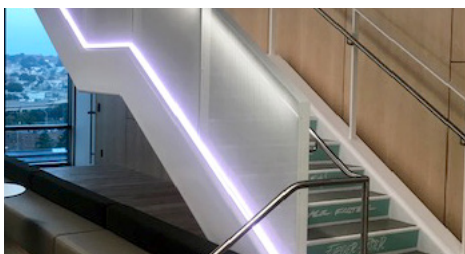
CEILING & INTERIOR WALLS



PARKING GARAGE SCREEN



RETAIL DESIGN



RAILING INFILL PANELS



EQUIPMENT SCREEN



DECORATIVE SCREENS



SIGNAGE



GARDEN, GROW WALLS



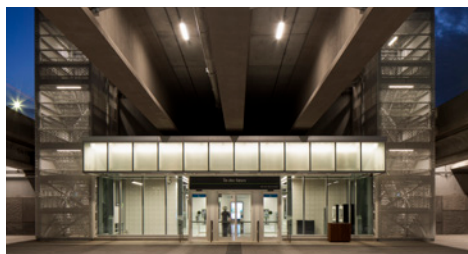
ACOUSTIC PANELS



RESIDENTIAL SCREENS



LANDSCAPE DESIGN



STAIRWELL SCREENS



SUNSHADES & FINS



SOFFIT & CANOPIES

AMICO ARCHITECTURAL CAPABILITIES AND QUALIFICATIONS



Product Range

We offer a comprehensive suite of architectural metal products, including:

- Expanded metal mesh
- Perforated metals
- Picture PERFect - Image to Perforation Materials
- Architectural gratings
- Laser cut metals
- Custom fabricated systems

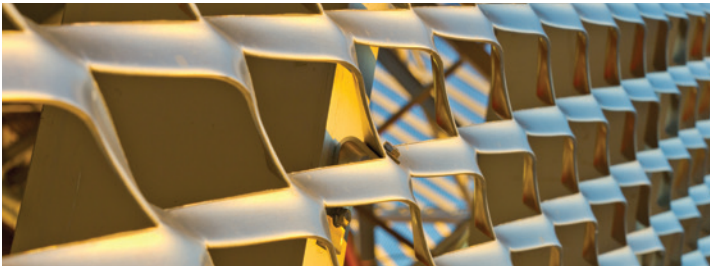
Our products are available in various materials such as aluminum, stainless steel, copper, and specialty metals, with a wide array of finishes to suit any design aesthetic.

Project Experience includes

Our website offers a large breadth of projects with many reputable architecture firms across the US and Canada.

Visit <https://amicoarchitectural.com/projects/>

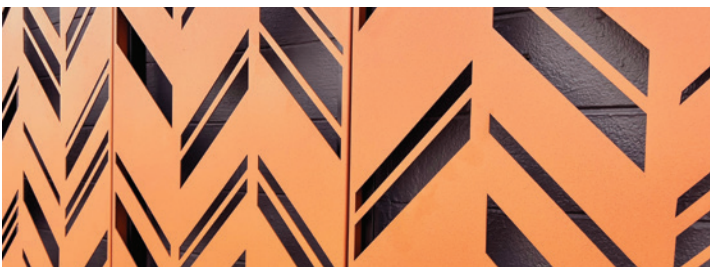
- Sacramento CA Convention Center, Populus
- University of California Riverside, Student Recreational Center, Cannon Design
- AirBnB Offices, San Francisco, WRNS Architects
- Pier 35, New York City, SHoP Architects
- City of Hope Pavilion, Irwindale CA, Gensler
- San Jose CA Airport (SJC), Fentress Architects



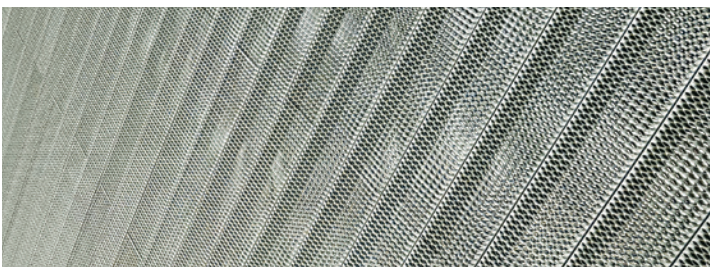
Expanded Metal Mesh



Perforated Metal



Laser Cut Metals



Architectural Gratings

