



AMICO MATERIAL VISUALIZATION



WHAT DOES THE MATERIAL LOOK LIKE FROM 400 FEET AWAY?

ALL-ACROSS PERFORATION

- Cost-efficient solution
- When perforated panels are mounted co-planar, you get a nice uniform appearance
- Provides a screened surface



**SAN FRANCISCO FEDERAL BUILDING
IN MORNING SUNLIGHT**



**SAN FRANCISCO FEDERAL BUILDING IN
EARLY AFTERNOON SUNLIGHT**



WHAT DOES THE MATERIAL LOOK LIKE FROM 400 FEET AWAY?

MIXED ALL-ACROSS PERFORATION

- Introduces subtle variety
- Allows for some design elements while staying budget-conscious
- Less noticeable at a distance but adds design interest in the near field



CAL-TRANS PANEL DETAIL



LIGHT CATCHING THE CAL-TRANS FAÇADE, EMPHASIZING PANEL VARIETY



LATE AFTERNOON SUN CREATING A MORE UNIFIED APPEARANCE TO THE FAÇADE



ALL-ACROSS PERFORATION SELECTION GUIDE



1/8" Diameter .326" Staggered Centers

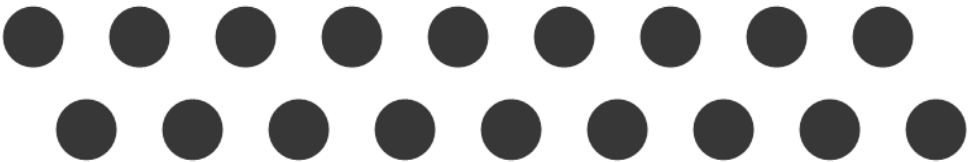
10.87 Holes PSI

13.33% Open Area

SMALL HOLES – LOW DENSITY

Design Impact:

- Higher opacity
- More sunlight reflection



1/2" Diameter 7/8" Staggered Centers

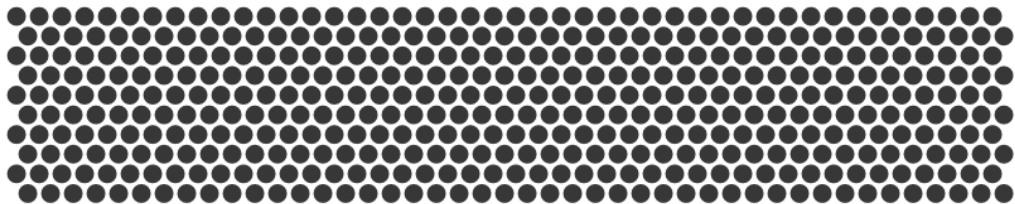
1.51 Holes PSI

29.61% Open Area

MEDIUM HOLES – MEDIUM DENSITY

Design Impact:

- Moderate transparency
- Will still catch a good amount of sunlight during some periods of the day



5/32" Diameter 3/16" Staggered Centers

32.84 Holes PSI

62.98% Open Area

HIGH HOLE DENSITY

Design Impact:

- High transparency
- Material will appear more “hazy,” and the sky will be a part of the panel’s visual impact



WHAT DOES THE MATERIAL LOOK LIKE FROM 400 FEET AWAY?

CUSTOM PERFORATION WITH GRAPHIC

- Subtle graphic application
- Good for breaking up a surface
- The opacity and contrast of the graphic change slightly throughout the day as the sun and shadow change
- Excellent for feature wall facing the highway to give character to your build without being overly
- Contrast between the finish and the background is important to ensure the image reads



PIMA COUNTY COMMUNITY COLLEGE



WHAT DOES THE MATERIAL LOOK LIKE FROM 400 FEET AWAY?

CUSTOM PERFORATION WITH GRAPHIC



PIMA COUNTY COMMUNITY COLLEGE



WHAT DOES THE MATERIAL LOOK LIKE FROM 400 FEET AWAY?

CUSTOM PERFORATION WITH TEXTURE

- Subtle texture to bring good visual interest to a surface without being overpowering
- Contrast between the finish and the background is important to ensure the texture reads



MEDTRONICS CAMPUS



WHAT DOES THE MATERIAL LOOK LIKE FROM 400 FEET AWAY?

CUSTOM PERFORATION WITH TEXTURE



MEDTRONICS CAMPUS



WHAT DOES THE MATERIAL LOOK LIKE FROM 400 FEET AWAY?

APEX03 EXPANDED MESH

- APEX03 is a higher opacity mesh, and when oriented opening upward, it maximizes opacity when viewed from below, but still allows daylight through when viewed from afar
- Opacity changes depending on location, and if driving past, will change in relationship to the driver



SANTANA ROW PARKING GARAGE SHOWN IN SHADOW



WHAT DOES THE MATERIAL LOOK LIKE FROM 400 FEET AWAY?

APEX03 EXPANDED MESH



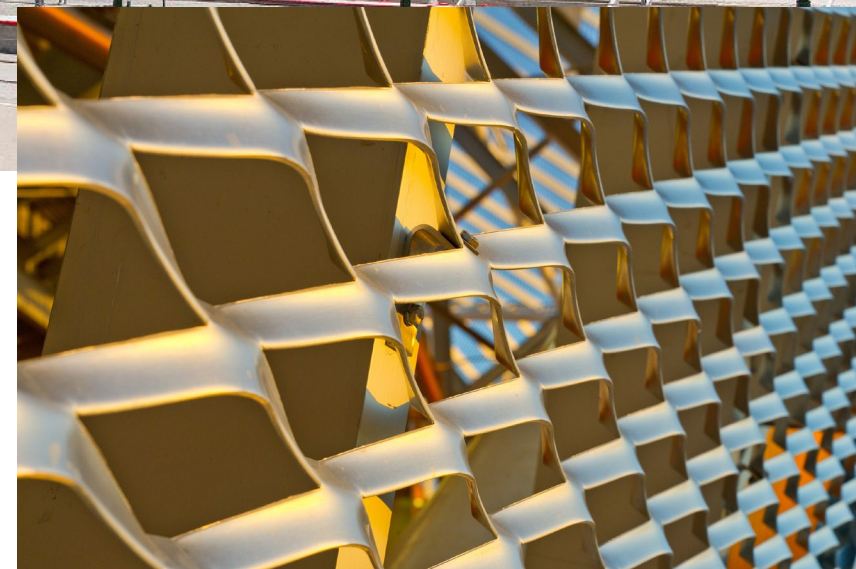
SANTANA ROW PARKING GARAGE SHOWN IN MIDDAY SUNLIGHT



WHAT DOES THE MATERIAL LOOK LIKE FROM 400 FEET AWAY?

APEX01 EXPANDED MESH

- APEX01 is the most open and transparent mesh
- In your design, sky will impact the panel perception
- As the viewer is as a greater angle to the mesh, it will appear more opaque



HOUSTON DYNAMO STADIUM



OPTIONS FOR INTRODUCING TASTEFUL DESIGN ELEMENTS

INTRODUCE ACCENT LIGHTING

- Emphasizes texture
- Creates a “beacon” for nearby highway
- Potentially emphasize brand colors



NASHVILLE WEST RIVERFRONT PARK (APEX01)



SACRAMENTO CONVENTION CENTER (APEX01)



SOUTHLAND CHRISTIAN CHURCH (APEX03)



OPTIONS FOR INTRODUCING TASTEFUL DESIGN ELEMENTS

INTRODUCE OFFSET SURFACES, REVEALS, AND SCREEN CUTOUTS. AND OTHER SIMPLE VARIATIONS

- Creates visual interest with the screen surface without drastically increasing cost
- Create rhythm for the eye as it scans the facility
- Brings the play of shadow into your design palette



COOKSVILLE GO STATION PARKING GARAGE (APEX01)



MONTREAL AIRPORT PARKING GARAGE (APEX03)





POWDER COATING

- Durable coating – most recommended for this application
- Interpon Anodic series provides “anodized-like” appearances that are subtle and tasteful
- Nice reflectivity



Gris bleu acier 715
D2525 Y229DQF / D3000 8225KQF



Bleu acier Platine
D2525 Y225HQF / D3000 8223NQF



Presque noir (9005)
D2525 YN286QF / D3000 8N261QF



Glace anodique
D2525 Y225VQF / D3000 8229ZQF



Plage dorée
D2525 Y224VQF / D3000 8223RQF



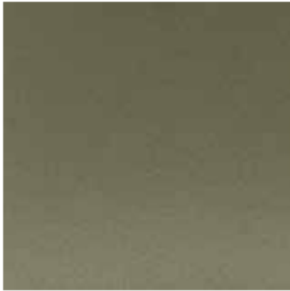
Bronze d'acier 1
D2525 Y227HQF / D3000 8224NQF



Argent léger / Bleu argent léger
D2525 Y226CQF / *D3000 8225NQF



Perle d'or
D2525 YW218QF / D3000 8226NQF



Bronze d'acier 2
D2525 Y228HQF / D3000 8227NQF



Champagne léger
D2525 Y226HQF / D3000 8228NQF



Splendeur de l'or
D2525 Y223JQF / D3000 8229NQF



Bronze anodique
D2525 Y225QQF / D3000 8222RQF